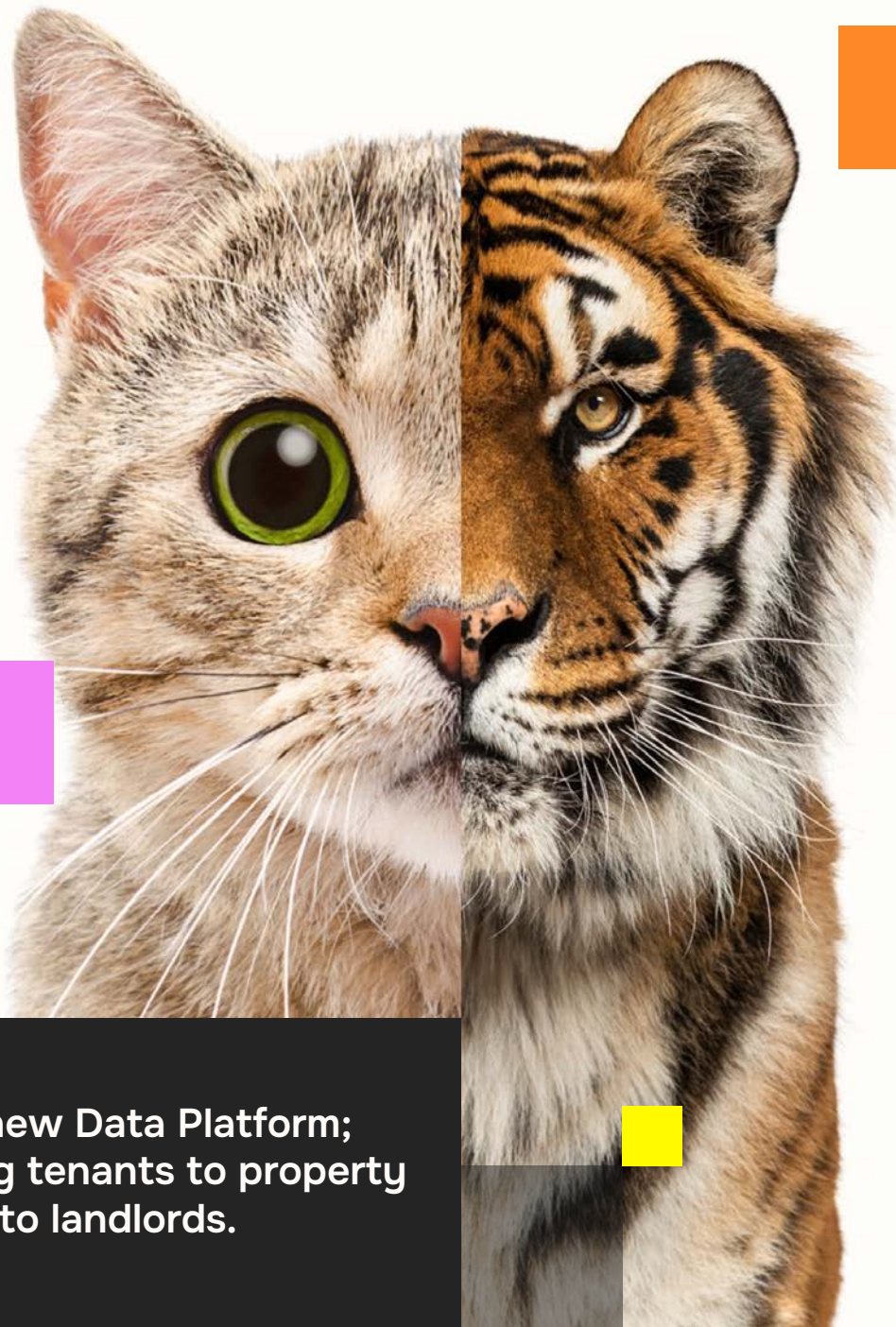




Hunting for property performance?

Smarter leasing & portfolio management for CRE heroes.



Kinexio's new Data Platform;
connecting tenants to property
managers to landlords.

Contents

CHAPTERS

- 03 Introduction
- 04 The state of CRE
- 08 Market volatility
- 10 Our partners
- 12 Platform overview
- 15 Portfolio dashboards
- 19 Cross-function collaboration
- 23 Leasing & sales
- 28 Final word



FOREWORD

Struggling to balance it all?



Historically the sales collection process has been manual, time consuming and a strain on tenant relationships. By the time the data's cleaned up and plugged into a model, it's no longer current. Kinexio changes that.

It automates the collection and validation of tenant sales data so you can see what's happening across your portfolio right now, and use that insight to make smarter, more profitable decisions tomorrow.

This IS a product guide to the Kinexio data platform, but it's also your first step to efficiently managing your portfolio. A bold claim to make, we agree, so read on and see if it stands up!

Speak to the Kinexio team



Spending time chasing down missing sales reports?



Finding sales collection a lengthy manual process?



Having difficulty filling in the gaps on missing sales data?



Difficulty reporting on sales data?



Lacking a clear view of tenant performance?



Want to understand asset performance?



Want to have a clear view to support lease negotiations?

“

Sales data collection is more than just pulling together figures, it has the ability to significantly impact leasing negotiations and decisions. In my experience the ability to identify, for example, poor performing tenants for early intervention can deliver 2-5% uplift in portfolio-wide sales and reduce tenant churn by up to 10%. That's what we have focused on, with twelve plus years of experience collecting sales data, we have taken that knowledge and made it simpler, faster, and in a way that can provide insights to protect NOI and longer-term asset value. Essentially turning what was once a chore into one of the most powerful tools in the arsenal.”



Mark Bruce

Data & Insights Director, Kinexio

**Data's wrong.
Deadline's
missed.
Should've
used Kinexio.**



The State of CRE

THE STATE OF CRE

Some heroes wear capes. Others use Kinexio.

Have you ever noticed how some of your colleagues make their jobs look effortless; they have the answers to the questions, before they've even been asked. They're calm in the boardroom, calling the shots with confidence. Maybe, on the weekends they're out fighting crime, because they must be superheroes, right?



Say goodbye to zero control; chasing reports, juggling systems, and crossing your fingers that the numbers tell a good story.

And say hello to feeling like a hero; in control, in the know, and always one step ahead.

In the current real estate market, you have to optimize every square foot possible, whether that be financially, operationally or strategically, the difference isn't just about effort. It's about insight. It's about having the right tools to turn data into direction, and performance into progress.

**That's where this guide comes in.
Because whether you're:**

- Deciding the best rent structure
- Entering lease negotiations and renewals
- Curating the right tenant mix and leasing strategy
- Looking to improve investments, valuations and financing
- Assessing risk management and early warning signs
- Supporting retailer expansion and site selection

...the question you need to answer is the same:

Are you leaving revenue on the table by not using the information at your disposal, because you don't have the right tools for the job?

Welcome to the guide for those who want to know, and act, with confidence.

Welcome to the world of Kinexio.

Sales Collection | Detailed View

Store	GIA (Gross Internal Area)	Gross Sales	Sales Density	Average Sales Density (Minor Category)	Store Space Performance	Space Adjustment Needed
Store 1	12,476 SQF	£83,769	£7 / SQF	£7 / SQF	Outperforming	0 SQF
Store 2	8,286 SQF	£373,043	£45 / SQF	£45 / SQF	Outperforming	0 SQF
Store 3	152,400 SQF	£5,284,000	£35 / SQF	£35 / SQF	Outperforming	0 SQF
Store 4	4,865 SQF	£205,884	£42 / SQF	£42 / SQF	Outperforming	0 SQF
Store 5	726 SQF	£61,956	£85 / SQF	£36 / SQF	Outperforming	1,010 SQF
Store 6	1,611 SQF	£21,438	£13 / SQF			
Store 7	2,315 SQF	£85,426	£37 / SQF			
Store 8	1,625 SQF	£189,258	£116 / SQF			
Store 9	1,296 SQF	£42,708	£33 / SQF			
Store 10	1,374 SQF	£172,369	£125 / SQF			
Store 11	10,024 SQF	£560,598	£56 / SQF			
Store 12	2,000 SQF	£67,301	£34 / SQF			
Store 13	2,276 SQF	£190,235	£84 / SQF			
Store 14	1,842 SQF	£135,333	£70 / SQF			
Store 15	1,596 SQF	£35,256	£22 / SQF			
Store 16	1,846 SQF	£35,262	£19 / SQF			
Store 17	480 SQF	£59,380	£124 / SQF			
Store 18	1,612 SQF	£32,409	£20 / SQF			
Store 19	2,735 SQF	£110,560	£40 / SQF			
Store 20	301 SQF	£908,906	£3,023 / SQF			
Store 21	2,339 SQF	£90,998	£39 / SQF			

Store Space Performance	Space Adjustment Needed
Outperforming	0 SQF
Outperforming	0 SQF
Outperforming	0 SQF
Outperforming	0 SQF
Outperforming	1,010 SQF
Underperforming	-1,010 SQF
Outperforming	1,025 SQF
Outperforming	1,034 SQF

Opportunity vs risk

Identify under or over performing tenants based on the space that they occupy.

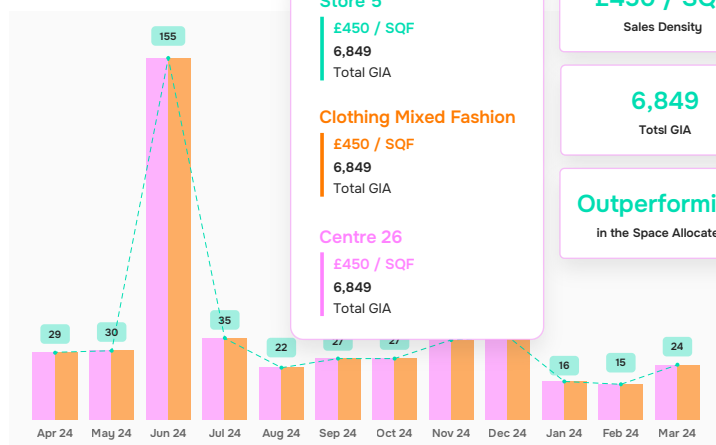
Get a clear view on expansion opportunities and risks at a tenant level ahead of time, to avoid abortive costs and maximize returns.

Sales vs density

Experience the ability to analyse a tenant's performance against sales density benchmarks, in order to understand the space requirements and tenant performance and inform strategic leasing decisions.

Sales Performance | Retailer Sales Density

Gross Sales per Square Foot



£3,083,386

Total Gross Sales

£450 / SQF

Sales Density

6,849

Total GIA

Outperforming

in the Space Allocated



If you're ready to move faster,
think smarter, and see clearer
- step fully into the light.

Speak to the Kinexio team



STATE OF CRE

Where's the truth? Somewhere between PDF and panic



Even today, most CRE businesses are tied to playing catch-up when it comes to collecting, sharing, and using sales data strategically. It's late, it's inconsistent, and it often doesn't reflect the full picture.

You might know how a unit performed last quarter... eventually. But you don't know what's happening right now, or what's coming next.

That's the problem.

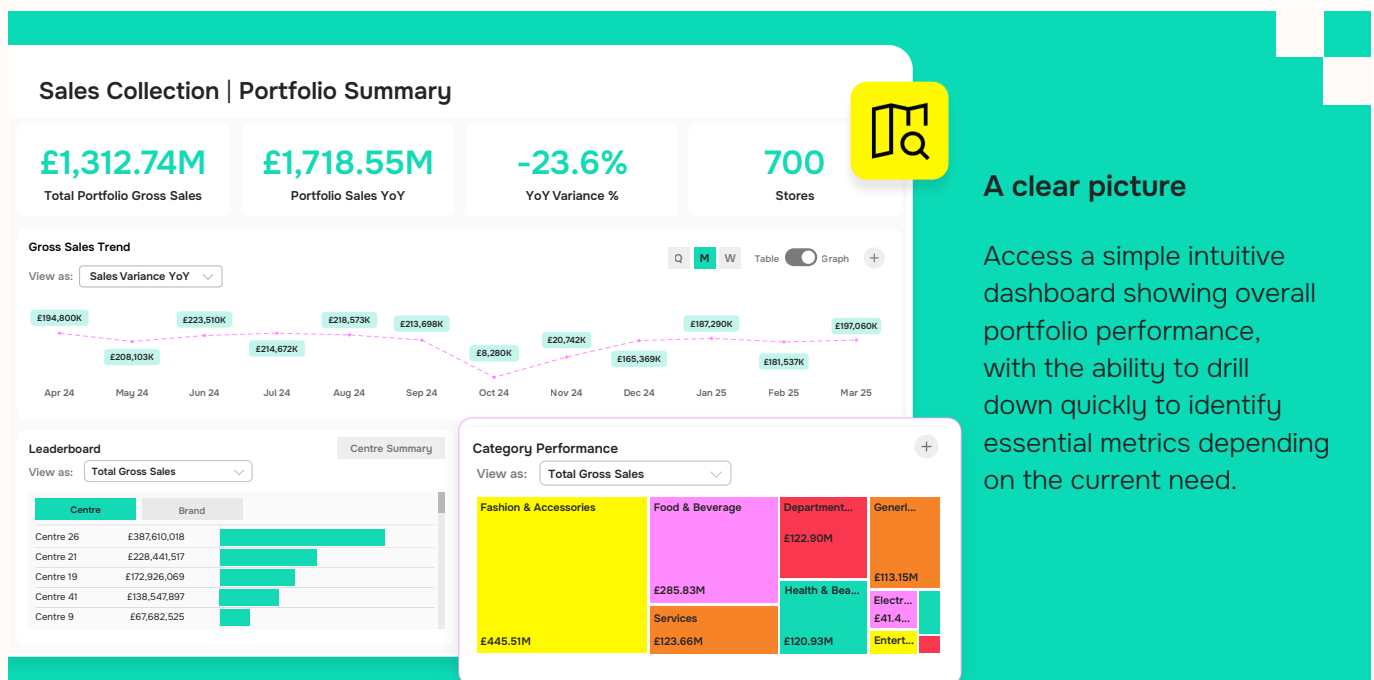
Because in today's market, knowing what's happening, and understanding the impact of your leases now isn't a luxury. It's the baseline. And if your systems can't deliver it, you're operating in the dark.

It can feel like being stuck:

- Asking tenants for the same numbers multiple times.
- Manually consolidating reports from a dozen formats.
- Guessing at performance instead of knowing it.

There is an opportunity to hero a cleaner, leaner operation, with relevant insights flowing from tenant to landlord to portfolio, with real-time numbers and minimal effort. Spot the outliers early, trends before they become problems, and make decisions that move the needle, not just keep the lights on.

And the difference all comes down to how connected, or disconnected, your data is. It's that simple.



All I said to
Tasha was she
should have
used Kinexio.



Market volatility

MARKET VOLATILITY

There's no hiding from volatile markets

It used to be about location, location, location. Today, it's also about timing, timing, timing.

Trade is turbulent. Consumer behaviour is unpredictable. Supply chains go from smooth sailing to stormy seas overnight. And while inflation might cool one month, interest rates, energy costs, and geopolitical events are always ready to keep things interesting.

For CRE operators, this isn't just background noise. It's the new operating environment.

The businesses that survive are reactive.

The ones that thrive? They're predictive.

To stay ahead, you need more than spreadsheets and end-of-month reports. You need the ability to see what's coming, model the impact, and act before the rest of the market even feels the tremor. In a volatile market the ability to understand retailer performance, whether that's poor performance, bankruptcy, or repositioning, is key.

Arm yourself with live data, smart forecasts, and trend signals that help you understand:

- Which tenants are outperforming, or under pressure.
- Which sites are gaining momentum, and which need support.
- How shifting foot traffic, spending, and local factors might affect the next quarter, or the next year.

Without clear insight it can be difficult to be agile against a varying and challenging economic backdrop. Real-time awareness becomes your competitive advantage, and forecasting isn't a bonus, it's a necessity.

You can't control the chaos out there. But with the right systems, you can control how your portfolio responds to it.



**Steve just
discovered the
power of
automation,
thanks to
Kinexio.**



Our partners



OUR PARTNERS

Transforming foot traffic data into property performance

PFM Intelligence is a leading provider of advanced foot traffic analytics and location insight solutions for commercial property operators. By delivering accurate, real-time data, PFM helps landlords and asset managers understand visitor behaviour, optimize tenant mix, and demonstrate asset value to investors...

Why foot traffic data matters

Foot traffic is more than a count of visitors—it's a critical performance metric. PFM enables operators to:

- **Benchmark performance** against local competitors and national trends.
- **Understand visitor patterns** across days, weeks, seasons, and campaigns.
- **Identify opportunities** to improve visitor duration, conversion, and spend.
- **Evidence ROI** for leasing, marketing, and placemaking initiatives.

As a Kinexio partner, PFM Intelligence complements Kinexio's advanced property data platform. Together, we make it easier to connect, visualize, and act on foot traffic data alongside occupancy, leasing, and engagement metrics—so you can drive performance with confidence.

“

The Kinexio platform is delivering a fresh new perspective of retailer and asset performance, which we believe will help drive industry success as the commercial retail industry continues to evolve. We're excited to partner with Kinexio, with our data supporting the provision of the complete picture of not just density of movement, but how that translates into sales, and ultimately asset and portfolio performance. Through the Kinexio platform the ability to collect data faster, and to disseminate insights to the right stakeholders improves productivity and decision making. Having a clear picture is something that the industry has been striving for and working with Kinexio that has now been brought to life.

How PFM supports commercial property success:



Accurate data capture

PFM's sensor networks and analytics platforms record visitor volumes and flows with precision—empowering operators to measure true asset performance.



Granular reporting

Custom dashboards and automated reports deliver clear insights at asset, zone, and entrance level, so teams can track trends and respond quickly.



Actionable insights

Data is translated into recommendations, helping property managers and marketers:

- Tailor events and promotions to maximize foot traffic.
- Refine layouts and signage to optimize visitor journeys.
- Validate leasing strategies with robust evidence.



Trusted benchmarking

PFM's UK-wide benchmarking enables assets to track their results against comparable destinations, providing valuable context for stakeholders and investors.

**With Kinexio
the drama
is gone**



Platform overview

PLATFORM OVERVIEW

Data is here to stay, are you?

Forget dashboards that look pretty but tell you nothing new. Forget data dumps that arrive late, make no sense, and go nowhere.

Kinexio isn't just another reporting tool, it's your source of truth for all of your leasing and performance insights.

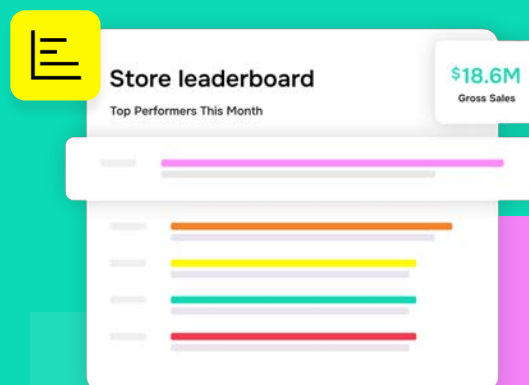
It's the central intelligence system of your entire commercial real estate operation, the technology that connects your people, platforms, and performance data, from the shop floor to the top floor.

It's no longer viable or cost effective to have to log into several siloed point solutions.

The alternative is to have Kinexio as the end-to-end solution, to do the hard work so you don't have to. Working seamlessly in the background, Kinexio can pull in real-time data from tenants, leases, point-of-sale systems, facilities software, foot traffic counters, marketing tools, and more – either collected through the Kinexio platform or integrated into your tech stack.

See results

Share sales performance results with your tenants with ease through the Kinexio app. This supports tenant relationships and further incentivizes sales provision and partnerships.

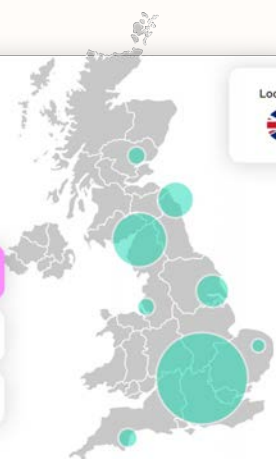


Portfolio Income by Map

☒ Total rental income

☐ £ Variance

☐ % Variance



Location



Portfolio-wide viewpoint

Access a global view of a portfolio, that highlights top level KPIs, to better understand performance across different assets and geographies.

PLATFORM OVERVIEW

Insights from layered data

Overlay data onto asset floor plans to help visualize performance and identify trends. Clearly see units, areas or zones within a property that's over or under performing.



Visitors | Centre Map View

Retailer	Footfall	Variance YoY %	Variance YoY %	
Store 5	3,621,941	355,120	10.9%	
Store 2	3,204,574	2,671,414	501.1%	
Store 7	2,270,313	16,519	0.7%	
Store 8	2,115,351	-155,238	-6.8%	
Store 6	1,880,814	20,449	1.1%	
Store 1	1,790,234	1,790,234	-21.5%	
Store 3	1,037,594	-283,430	1.9%	
Store 9	695,552	-45,181	-6.1%	
Store 10	679,120	-1,329,185	-66.2%	
Store 4	173,195	-188,833	-52.2%	
Total	17,468,688	2,851,868	19.5%	



We provide the insight that helps you:

Gain the competitive advantage and access the data to enhance your portfolio performance.

- ✓ Understand unit/brand-level performance
- ✓ Monitor sales trends across tenants, locations and product category
- ✓ Correlate, spend, and marketing activity
- ✓ Spot early warning signs of underperformance
- ✓ Make confident decisions, without digging for data

So instead of emailing tenants for last month's numbers, you can activate your operations by:

- ✓ Optimizing underused space and capitalizing on over used space
- ✓ Forecasting next quarter with precision
- ✓ Backing top-performing retailers
- ✓ And walking into lease negotiations on the front foot
- ✓ Engaging with poor performing brands

Because control isn't about having all the data.

It's about knowing what to do with it and having a system that does the heavy lifting for you.

**For Mark,
Kinexio makes
managing
tenants feel like
a holiday every
single day.**



Dashboards

DASHBOARDS

Combining wisdom with tech. Dashboards that actually do something



Some dashboards look slick and then sit there. Static. Stale. Forgotten five minutes after you open them.

Not Kinexio.

Our dashboards don't just show you what's happening, they tell you what to do about it. From tenant performance to category trends, from single-store stats to portfolio-wide patterns, Kinexio gives you a pulse check on what's working, what's not, and what needs to happen next.

So how does it work?

At Kinexio we've been helping our customers collect sales data for years, we were custom

designed to solve this problem. With 90% user uptake from launch, and an AI-enriched collection tool we know how to crack the first problem you face: efficient collection of sales data.

We then take that data and instantly translate it into actionable insight for you, to inform your asset management and leasing decisions.

Through our bespoke dashboards we surface the information that shows you where you can derive value from your asset, so you can see what you need to inform positive outcomes. And because we connect the whole community: the retailer, leasing directors, property and asset managers, portfolio wide, we know how to disseminate the information people need most to the right people.

Insight delivered direct

Collect sales data directly from the Kinexio app, with an easy-to-use interface, providing secure and insightful performance reports delivered back to the end-user.



Sales Performance | Centre Summary

£713.42M

Total Gross Sales

-14.6%

Sales Variance YoY

Gross Sales Trends

View as: Sales Variance YoY

Center Portfolio



Filters

Clear all filters

Visitor Type

- ☐ Like-for-like (LFL) Sales
- ☒ Total Gross Sales

Time Period

Last Twelve Months (LTM)

Center

Centre 26

Store

All

DASHBOARDS

You could spend weeks generating a report. Or, just login...

All data, no insight vs organized optimized data and insight.

Picture this, instead of waiting two weeks for someone in Insights to run the numbers, you could already know:

- ✓ Which tenant is underperforming
- ✓ Which category is carrying the property
- ✓ Where foot traffic isn't converting into sales
- ✓ And who might be ready for a rent review (or a relocation)

With dashboards built into the platform, Kinexio delivers robust, flexible analysis that works straight out of the box – or can be fine-tuned to your portfolio, your teams, and your strategy.

And we work with leading industry partners to ensure we can deliver what you need.

Our partners in providing next level lease optimisation:

PFM
Unlocking location potential

Sensormatic
by Johnson Controls

AXPER



Kinexio has recorded over
175 million interactions with
users in 2024

Speak to the Kinexio team



DASHBOARDS

Smart insights for smarter decisions



Filter by brand, category, or location:

Want to know how all your F&B tenants are performing this week? One click, one view.



Pinpoint top and bottom performers instantly:

So that you know who to support, or to replace.



Export to PDF, Excel, or PowerPoint:

Get boardroom-ready in seconds.



Set dashboard subscriptions:

Want updates as soon as the latest sales data drops? You'll get notified automatically.

Want to find out more? Get in touch today and we'll walk you through the benefits and possibilities from the data in your assets, portfolio wide.

Speak to the Kinexio team

This isn't just about having data; it's about having it ready, relevant, and real-time.

**We were
crawling – now
we're flying'
with Kinexio.**



**Cross-function
collaboration**

CROSS-FUNCTION COLLABORATION

Still chasing sales reports? Or already acting on them?

Spending time on manual operations vs saving time and allocating time and resource elsewhere.

When it comes to sales data collection, historically it has been a lengthy and time-consuming process. However, there is an easier, more efficient and cost-effective way.

You no longer need to search through inboxes; forwarding Excel sheets, nudging unresponsive tenants, and wondering why half the portfolio missed the deadline (again).

With Kinexio it's all automated for you. And you've instantly got the information you need at your fingertips, to support decision making.

Kinexio plugs directly into the systems your tenants already use, removing friction, excuses, and time-consuming admin. With dedicated sales collection software, sales figures land where they should; in your hands, in the right format, at the right time.

Rank performance

Access a leaderboard to quickly rank tenant performance, providing a clear view to identify any actions necessary and to support decision making.



Sales Collection | Retailer Leaderboard

Store Leaderboard (Top Performers)

View as: Sales Variance YoY

Store	Gross Sales	Sales Density
Store 5	£9,447,067	# 1
Store 2	£5,610,563	# 5
Store 7	£2,676,794	# 8
Store 8	£2,512,456	# 9
Store 6	£2,295,016	# 3
Store 1	£2,115,422	# 15
Store 12	£2,057,324	# 13
Store 3	£1,999,436	# 16
Store 9	£1,930,211	# 17
Store 10	£1,339,024	# 22
Store 28	£993,348	# 19

Store Leaderboard (Bottom Performers)

View as: Sales Variance YoY

Store 38	-£2,700,448
Store 26	-£2,672,008
Store 43	-£2,616,686
Store 11	-£2,508,054
Store 19	-£2,457,073
Store 31	-£2,369,279
Store 37	-£2,229,632
Store 39	-£2,110,477
Store 24	-£1,966,871
Store 20	-£1,792,531
Store 14	-£1,771,210

No longer spend time and resource:

- ✓ Copy-pasting numbers from PDFs
- ✓ Following up with tenants for "just one more figure"
- ✓ Stressing over gaps in the reporting chain

You can:

- ✓ Have the ability to integrate with EPOS systems
- ✓ Using AI to extract and standardize emailed sales reports
- ✓ Letting the platform fill gaps with visualized, compliant estimates

The result? Clean, consistent, portfolio-wide data – without the circus.

CROSS-FUNCTION COLLABORATION

Built-in campaign chasing that prevents the drama



Sales collection campaigns don't have to be soul-destroying.

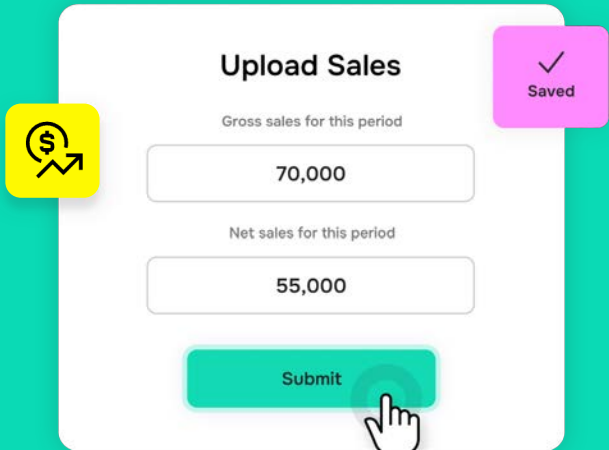
Kinexio automates the reminder emails, provides secure upload links, and shows you exactly who's submitted, who's late, and who needs a nudge, all in one place. You can even run multiple campaigns across different assets simultaneously, with bulk upload tools that save your team hours.

Remove the awkward conversations, and stress from tenant relationships by making sales data collection a simple, streamlined process.

Spend less time chasing and more time collaborating with your tenants for success.

And when audit season rolls around? Certified sales campaigns and proper legal documentation make compliance easy.

No backtracking. No panic. Just proof.



Upload Sales

Gross sales for this period

70,000

Net sales for this period

55,000

Submit

Saved

Enhanced sales data collection

Sales data provided by email from tenants is automatically scanned and uploaded using AI, provided in a clear report, with predictive data for missing numbers to support better insight.



Automated Campaign Emails:

Send custom reminders with direct upload links.



Campaign Chase Page:

Monitor the status of sales campaigns in real-time with a live dashboard.



Certified Sales Campaigns:

Attach legal documentation to campaigns for auditing and compliance.

Want to find out more? Get in touch today and we'll walk you through the benefits and possibilities from the data in your assets, portfolio wide.

Speak to the Kinexio team →

CROSS-FUNCTION COLLABORATION

Automated, AI-enriched data collection



AI auto scan

Sales emails scanned

220

Approve



Time taken:
2.9
SECONDS

Eliminate manual data entry and reduce human error:



AI mail ingestion:

Our system intelligently reads and extracts sales data from emails, standardizing it instantly.



Estimations engine:

Automatically generate and visualize estimations for non-compliant or missing data.



Predictive analytics:

Gain insight with forecasting analytics to give you a view to the future.

Integrate with your workflow

Kinexio plugs into your existing systems to simplify operations:



Portfolio-wide data management: Manage submissions and data from multiple sites in one dashboard.



Bulk upload support: Input large volumes of data in seconds.



Accounting & ERP system integration: Feed verified sales data directly into your existing systems.

**Sarah just
secured higher
rent on renewal
thanks to
Kinexio.**



CROSS-FUNCTION COLLABORATION

Leasing negotiations that don't require 48 cups of coffee

Kinexio doesn't just collect data, it translates it.

Once the numbers are in, the platform gets to work uncovering what they actually mean. Want to know which tenant is underperforming? Which category is surging? Whether last month's event delivered ROI?



Benchmark performance:

Breakdown financial performance by property, tenant, or category.



Space utilization:

Spot which tenants are overperforming and need more space, against those underperforming at risk of churn.



Real-time dashboards:

Surface what's happening today, not last quarter.

Don't spend time trying to understand what's gone wrong, or paying for external consultants, when you already have the strategic insight at your fingertips.



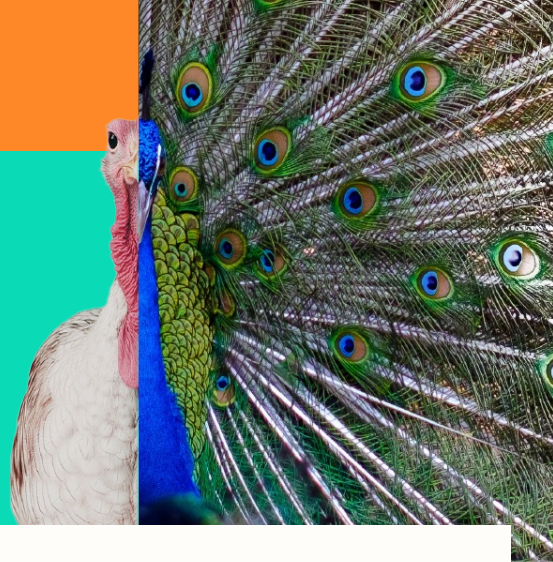
Kinexio has recorded over 175 million interactions with users in 2024

Speak to the Kinexio team



LEASING

Finding the full potential of your leases



Let's get down to the crux of it; how does Kinexio make you more profitable?

When it comes to leasing, you're either making sharp, strategic decisions backed by data, or you're crossing your fingers and hoping for the best.

With an end-to-end solution you no longer have to enter into lease reviews armed with anecdotal feedback and fuzzy figures.

They listen to retailers who “promise” foot traffic was down. They base rent decisions on vibes and vague patterns.

There is a different way: Kinexio.

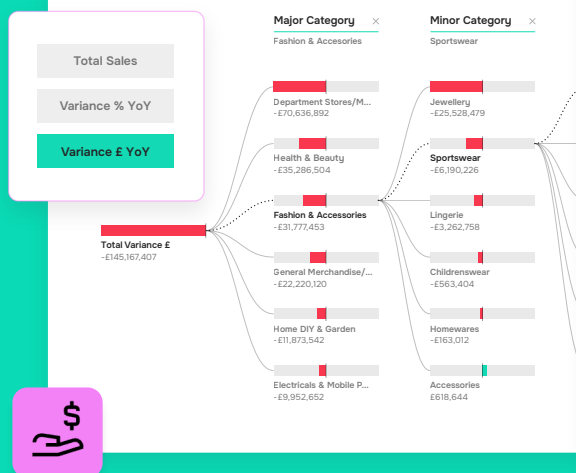
Experience access to the hard numbers, clean insights, and a portfolio view that puts every lease in crystal-clear context.

Drill down into the detail

Experience the ability to analyze sales by category.

Get an in-depth look by drilling down into insights to quickly identify the root cause of growth or declines.

Performance by Category



Brand

Brand 3

-£3,413,016

Brand 6

-£1,602,816

Brand 2

-£1,091,113

Brand 1

-£967,748

Brand 4

-£814,508

Brand 5

-£494,354

LEASING

Spot the stars. Surface the strugglers

With Kinexio, every sales figure is tied to a lease. That means you can:

- ✓ Compare performance across unit types, sizes, and categories
- ✓ Benchmark tenants to understand comparative performance
- ✓ Drill down into multi-site tenants to isolate underperforming stores
- ✓ Tie sales directly to kick-outs or lease break conditions

Certified sales give you credibility

With complete, certified, and consistent sales data at your fingertips, Kinexio helps you:

- ✓ Identify tenants' worth growing
- ✓ Flag stores ready for relocation or renegotiation, to support justifying rent increases during turnover periods
- ✓ Compare performance across categories, centres, and timeframes
- ✓ Justify leasing decisions with auditable, certified sales data

And for forward-thinkers? Estimations and trend analysis tools help you model leasing scenarios before they play out, so you're not just reacting to performance. You're shaping it.



If you're ready to stop reacting and start leading, get in touch. Let's turn your data into your biggest strategic advantage.

Speak to the Kinexio team



LEASING

Speed is everything - time kills all deals.

In leasing, timing is everything. The faster you act, the stronger your position.

Kinexio gives you:



Real-time dashboards for live performance



Auto-notifications when fresh data arrives



CMS previews that cut out "Can you pull that report?" delays

You don't win races looking in the rear-view mirror, Kinexio keeps your eyes on what's ahead

Compliance without the chase

Thanks to Kinexio's automated email links, onboarding flows, and smart campaign tools, data submission rates go up, and excuses go down. You get:



Higher compliance

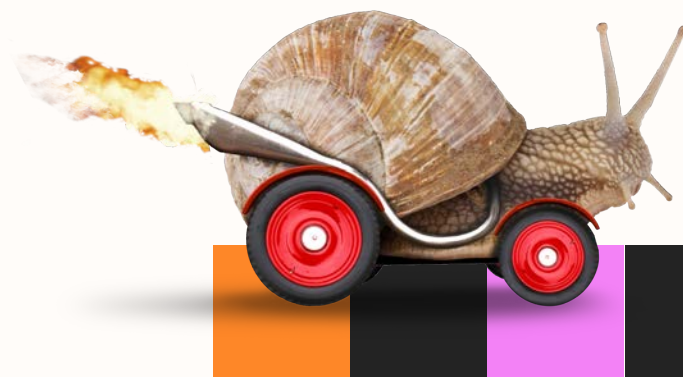


Fewer black holes



A clearer picture of who's thriving (and who's just surviving)

Just like an assembly line, what you need comes to you.



**Josh is
forecasting with
confidence,
thanks to
Kinexio.**



Final word

FINAL WORD

Your decision making is about to get a whole lot easier. Time to fly

Whether you're focused on leasing insight, increasing asset value, improving tenant relationships and performance, or tightening your forecasting, Kinexio gives you the clarity, consistency, and confidence to make better calls — faster.

From great sales data collection through to the insights and analytics you need, take the steps today to attract and retain tenants, mitigate the risk of a bad lease, protect NOI and increase revenue.

If you're ready to stop reacting and start leading, get in touch. Let's turn your data into your biggest strategic advantage.



If you're ready to stop reacting and start leading, get in touch. Let's turn your data into your biggest strategic advantage.

Speak to the Kinexio team



If you're ready to stop reacting and start leading, get in touch.
Let's turn your data into your biggest strategic advantage.

Feature		Benefit
	AI-powered email ingestion	Extracts and standardizes emailed sales reports to eliminate manual entry and formatting headaches.
	Predictive analytics	Fills in missing or late data with intelligent, transparent estimates to keep reporting consistent and reliable.
	Multi-format data upload tools	Allows tenants to submit sales data in formats they're comfortable with, increasing compliance and submission rates.
	Automated sales collection campaigns	Sends reminders, tracks submissions, and reduces admin burden across multi-asset portfolios.
	Certified sales campaigns	Provides verifiable, auditable sales data to support lease clauses and contractual discussions.
	Lease-linked sales dashboards	Connects performance data directly to lease terms for faster, better-informed negotiations.
	Occupier performance benchmarking	Enables apples-to-apples comparisons across store types, sizes, and categories.
	P&L and rent-to-sales analysis	Helps assess affordability and justify rent increases or renegotiations.
	Live notifications & data previews	Gives leasing teams instant access to new submissions, reducing decision-making lag.
	Campaign Chase Page	Offers real-time visibility of campaign progress, submissions, and gaps – all in one place.
	Centralised, portfolio-wide dashboards	Delivers a unified view of operational performance across multiple sites and asset types.
	Integration with existing systems	Syncs verified sales data with your core financial and operational software for true system-wide intelligence.
	Real-time EPOS integration	Automatically pulls sales data directly from point-of-sale systems for instant, accurate performance insight.
	Forecasting and trend analysis tools	Helps anticipate change, model future performance, and make proactive leasing decisions.



Enterprise software solution for property management.

One central platform to enhance portfolio performance and improve the NOI of commercial real estate.

Engage occupiers, activate communities, access AI-enriched data, and realize untapped potential.

CONNECT. ENHANCE. PERFORM



Follow us on LinkedIn →



Watch us on Youtube →

www.kinexio.io